



**ALLTRACK**  
SUPPLIES

*Established since 1987*



hospital**tracks**

MONOTRACK SYSTEMS

# Series 9000 Monotrack

rigid rail, moving rail, shower track,  
IV equipment and curtain cassettes

Ideal for use in hospital casualty, intensive care, retirement homes, dental and doctor surgeries for flexibility of bed space. The Monotrack moving rail system enables flexibility and use of IV equipment.



This manual covers the architectural specifications, complete component reference, component applications, installation instructions and suggested layouts. Also features IV equipment and cassette loaders for curtains.



**MONOTRACK FEATURES** include fixed rail system, curtain cassette available for ease of curtain removal and replacement when laundering. Installation hardware readily available for all types of applications.

**PLEASE NOTE:**  
DUE TO THE  
VARIATION IN  
REQUIREMENTS,  
ALL PRICING FOR  
MADE TO  
MEASURE  
HOSPITAL TRACK  
WILL BE BY  
QUOTATION ONLY.



# architecturalspecifications

SERIES 9000 MONOTRACK RIGID RAIL BEDSCREEN TRACK  
SLOTTED TRACK FOR MOVING RAIL SYSTEMS  
MINI MONOTRACK FOR SHOWER CUBICLES  
IV (INTRAVENOUS) EQUIPMENT  
CURTAIN CASSETTE SYSTEM



# architecturalspecifications

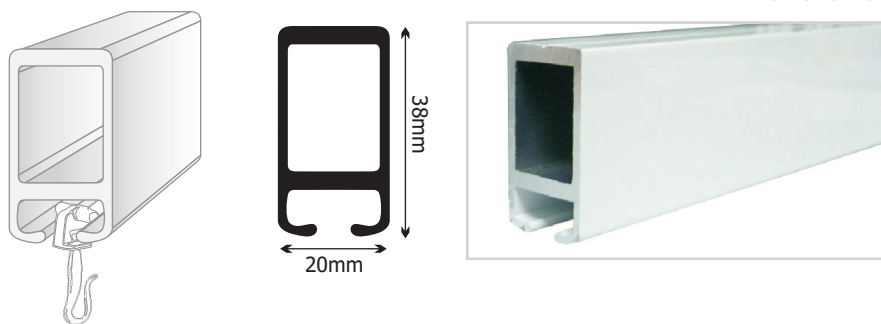
SERIES 9000 MONOTRACK (BEDSCREEN RAIL)

## ALUMINIUM RIGID RAIL SYSTEM

The Series 9000 Monotrack is manufactured from aluminium and available in clear anodised and white epoxy finish (refer components page for track colour and lengths available). Track section is 38mm height and 20mm width overall. This is suspended on aluminium tubular hangers supported from the structural ceiling and fixed at the height shown on drawings. Refer installation page.

## TRACK DETAILS

### TRACK SECTION



## RAIL SPAN

Windoware's solid Monotrack can span to a length of 3 metres from wall to wall without having any supports - saving you time and money. The solid Monotrack can be ceiling mounted or suspended.



Can be suspended  
or ceiling mounted



# architecturalspecifications

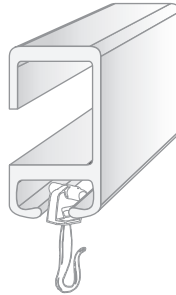
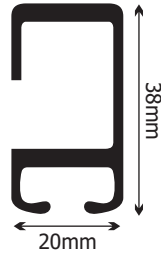
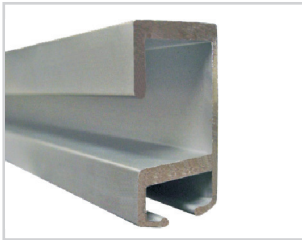
## SLOTTED MONOTRACK

### PATENTED MOVING RAIL SYSTEM

Slotted Monotrack is used to operate a moving rail system allowing you to change cubicle sizes.

### TRACK DETAILS

#### TRACK SECTION



Track section 10369/Silver 10370/White (6m lengths only) is 38mm in height and 20mm in width overall. Main front rails and head rails are slotted to allow for movement of the trolley, which allows you to connect the rigid rail Monotrack Series 9000.

### PLEASE NOTE:

When ordering tracks, don't forget the track sockets and curtain hooks



# architecturalspecifications

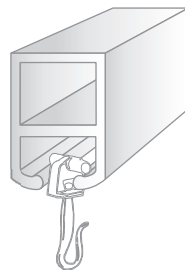
## MINI MONOTRACK

### FOR SHOWER CUBICLES

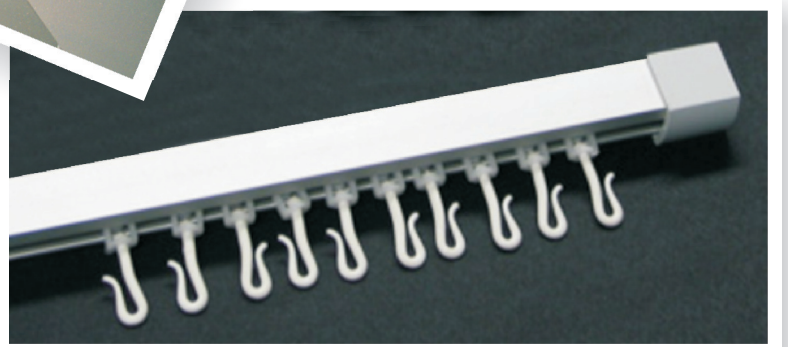
Mini Monotrack manufactured from aluminium, available in silver or white epoxy finish, this Mini Monotrack is suited for shower tracking or lightweight screens.

### TRACK DETAILS

#### TRACK SECTION



Track section 10371/Silver 10372/White (6m lengths only to be 25mm height and 20mm width overall. Manufactured from aluminium in clear anodised or white epoxy finish, can be suspended or ceiling fix.



### PLEASE NOTE:

Standard sizes are available at  
1m x 1m or 2m x 2m

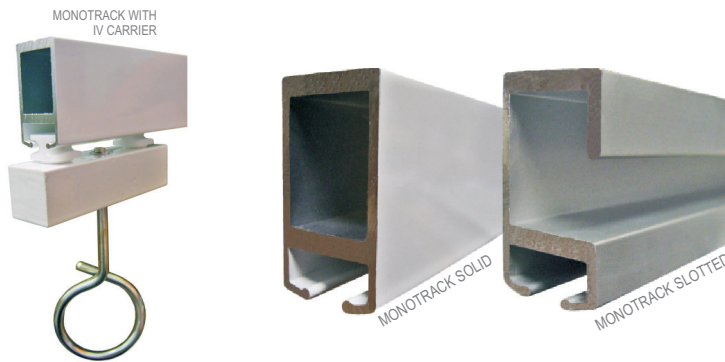
# architecturalspecifications

## IV (INTRAVENOUS) EQUIPMENT

### IV COMPONENTS

The oval installation is good for operating rooms and intensive care giving complete freedom of movement around beds wherever it is installed for intravenous feeding.

The IV Carrier is fitted with 2 nylon wheels and is constructed to create a 5 point suspension system with a stainless steel safety hook attached to the carrier body.



The intravenous track and carrier are normally supplied and installed as a 'U' shape track in half the width of the bed. This then allows up to 5 intravenous drip systems to drop to the patient without interference.

### IV CARRIERS



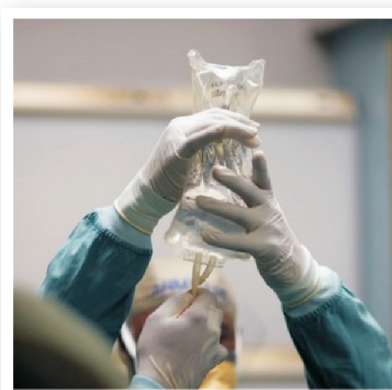
IV Tree Carrier  
10497 Silver



IV Tree Carrier  
10498 White



Self Locking IV Trolley  
10499 Silver



### IV TREE

Five Point IV Tree  
Adjustable, 10500  
900mm Extension  
and 10501  
1200mm Extension.



# architectural specifications

CURTAIN CASSETTE SYSTEM

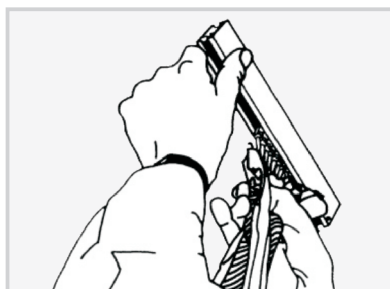
## CASSETTE INFORMATION

The curtain cassette is designed to allow a quick and easy change of the curtain. The cassette sits 70cm from the end of the track. An interchange of curtains can occur in one easy motion.

## INSTALLING CURTAIN CASSETTE SYSTEM

These Curtain Cassette Loaders make bedscreen cubicle curtain changing quick and easy. Sturdy aluminium box section matching the track system.

1. Insert curtain swivel hooks into Cassette insert



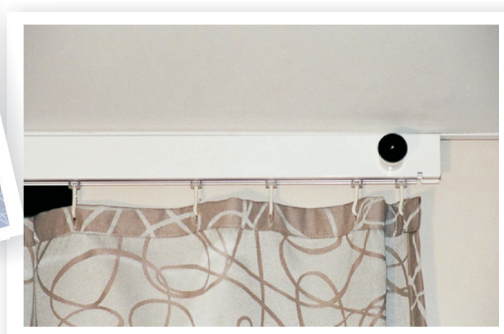
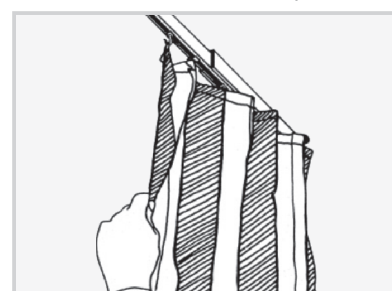
2. Place Cassette into the bridge at angle locating against post inside bridge



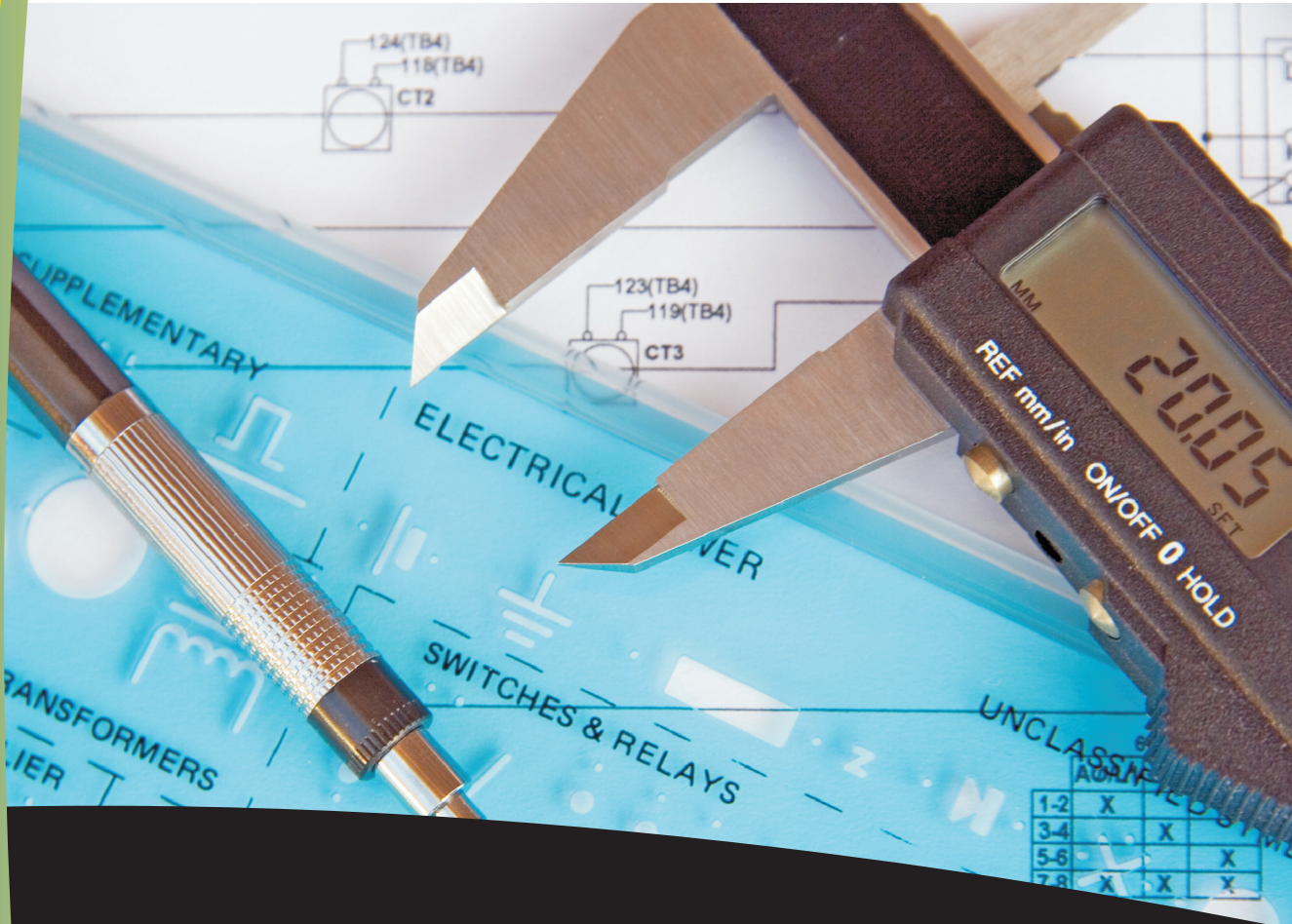
3. Withdraw release knob to assist final locking of insert



4. Draw the curtain along the track. To remove the curtain, reverse the procedure.







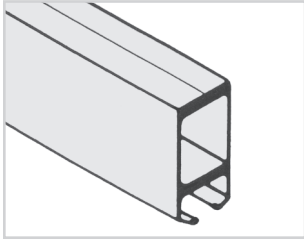
# technical specifications

COMPONENT APPLICATION AND INFORMATION

# technical specifications

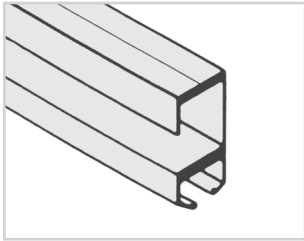
## COMPONENT APPLICATION AND INFORMATION

### COMPONENT APPLICATION



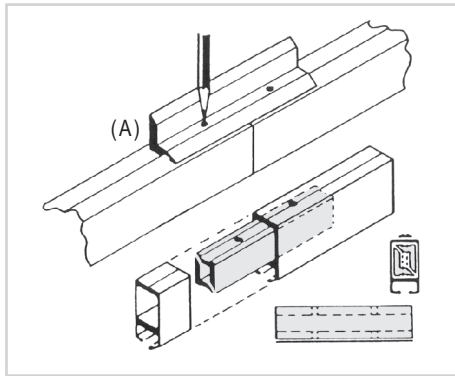
#### SOLID TRACK

Series 9000 Solid Monotrack for rigid rail tracking systems. This solid Monotrack is extruded from aluminium, suitable for high strength spanning. Standard finish is clear anodised and white epoxy finish is also available. Can be bent or supplied pre-bent to specifications. Available in 4.0m, 6.0m and 7.4m lengths.



#### SLOTTED TRACK

Series 9000 Slotted Monotrack for moving rail tracking systems. Is extruded from aluminium, standard finish is clear anodised and white epoxy finish is also available. Available in 6.0m lengths. Slotted track is made to accommodate the trolley, the heart of the moving rail system. This track cannot be bent, to achieve a bend you'll need to join a section of solid monotrack to the slotted track.



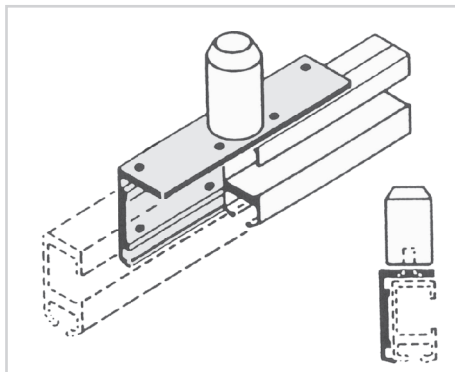
#### INTERNAL TRACK JOINER

A two piece joiner complete with four screws, manufactured from aluminium which gives a rigid joint. The internal track joiner once in position, does not interfere with the runners in the track.

Refer to Diagram A for accurate marking of holes to be drilled for clearance for screws.

Note: This joiner is to be used for the Solid Monotrack only.

Item No 10375 Silver

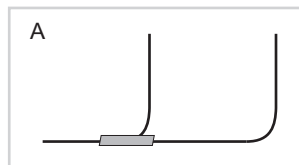


#### JOINING SPLICE

A right angle 40cm track joining splice is used for joining slotted track and Series 9000 Monotrack. Constructed from aluminium for a firm, rigid joint. Can also be fitted with a single point hanger for suspension. Also used for butting up a straight track to a curved track (A). The joining splice is screwed to the top of both tracks to give the appearance of the tracks being one piece. Note: When butting up of straight track, don't forget the end stop.

Item 10384 Silver

Item 10385 White



# technical specifications

## COMPONENT APPLICATION AND INFORMATION

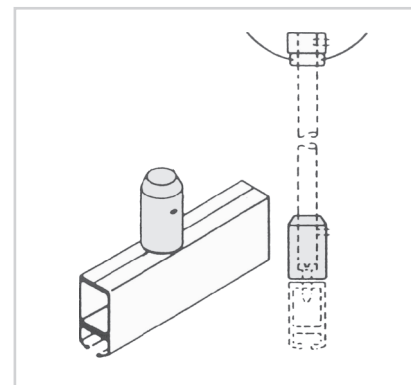
### COMPONENT APPLICATION

#### SINGLE POINT HANGER ASSEMBLY

The single point hanger fixes to the top of the track using a 12mm No. 6 countersunk self-tapping screw. The suspension tube is locked in with a grub screw.

Item No 10403 Silver

Item No 10404 White

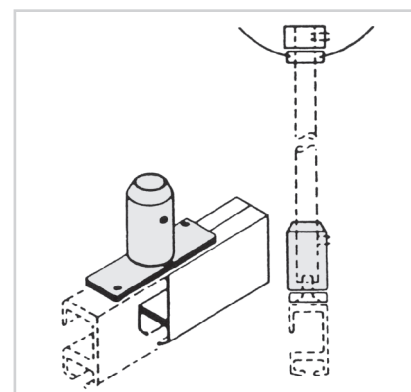


#### TWO POINT HANGER ASSEMBLY

The two point hanger assembly fixes to the top of the Monotrack using a 4.5mm No. 6 self-tapping screw. The suspension tube is locked in with a grub screw.

Item No 10405 Silver

Item No 10406 White



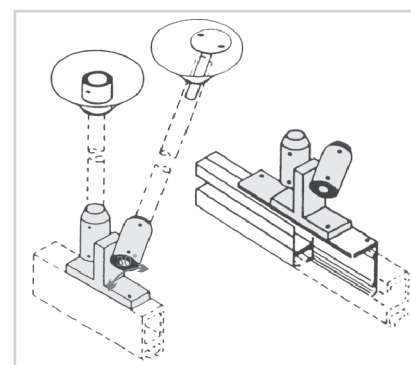
#### VEE HANGER ASSEMBLY

The vee hanger assembly is used where a standard vertical drop is required and additional support to prevent sideways movement of the track. Note:

Always ensure the maximum angle is 30deg between vertical and angled suspension tube. A swivel mount bracket (Item No 10407) is best used on the other end if fixing direct to ceiling.

Item No 10401 Silver

Item No 10402 White

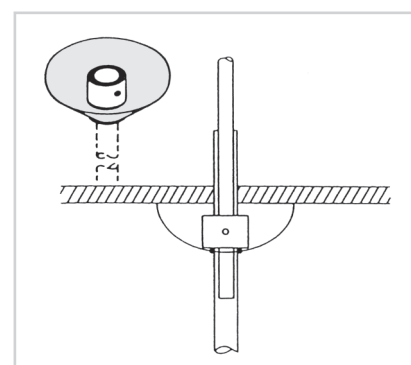


#### SUSPENSION TUBE CEILING COVER

The suspension tube ceiling cover is supplied complete with rubber grommets. It grips onto the suspension tube and holds the cover in place. The function is decorative, used to cover the suspension collar and give a neat finish to the finished installation.

Item No 10408 Silver

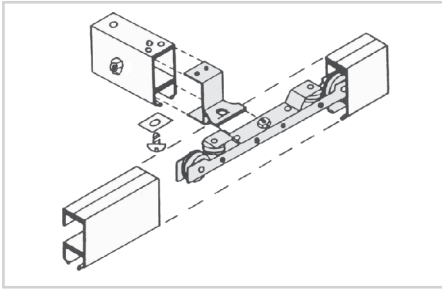
Item No 10409 White



# technical specifications

## COMPONENT APPLICATION AND INFORMATION

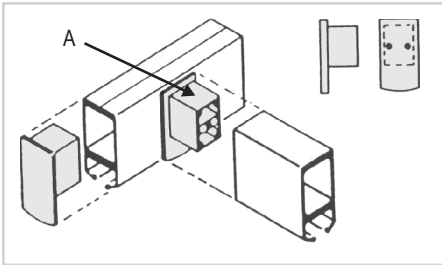
### COMPONENT APPLICATION



#### TROLLEY ASSEMBLY

The trolley is the key to the unique function of the moving rail system. Precision manufactured for ease of operation. The nylon wheels are complete with bearings and neoprene tyres. When fitting the trolley to solid track, it must be secured top and bottom of the track. Use a 12mm No. 6 self tapping screw.

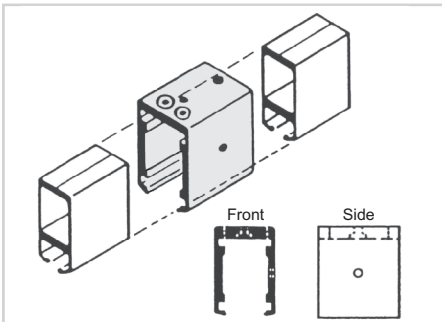
Item No 10410



#### TRACK END STOP

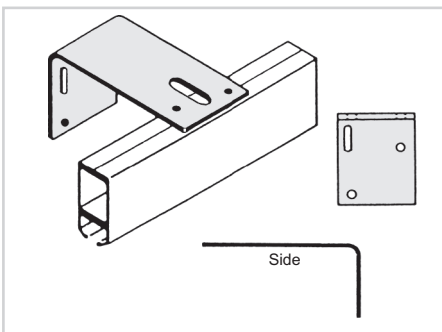
The track end stops are manufactured from PVC and are available in grey and white. The end stops are used to seal off the end of the Monotrack and to keep runners in and eliminate dust entering the track. Always fix to the track with a self tapping screw used as a right angle track joiner. Note: (A) This end cap is fixed to the side of the track.

Item No 10386 Grey Item No 10387 White



#### CEILING MOUNT CLIP

These clips are used for flush mounting of the track to a ceiling. Manufactured from aluminium. Screw directly into the ceiling. Then the track clips directly into the bracket. As an added safety precaution, a bolt can be passed through the track and the bracket to secure installation.

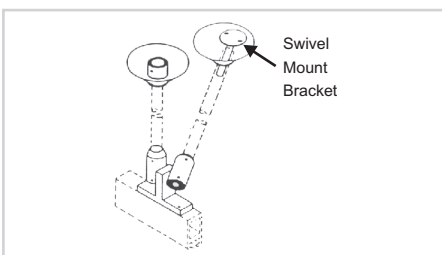


#### WALL BRACKET (SIDE FIX)

The wall bracket is constructed from steel. Fixes to the top of the track with a 75mm projection.

10398 Silver

10399 White



#### SWIVEL MOUNT BRACKET

This bracket is used where the suspension tube is fixed to a stopped fixing point or you are using Vee Hangers this avoids the need to bend the tube.

10407 Silver



# installationinstructions

SERIES 9000 MONOTRACK  
SLOTTED TRACK  
MINI MONOTRACK

# installation instructions

## SERIES 9000 MONOTRACK

### 1. METHOD OF SECURING CEILING HANGER

As in the case of all hanging methods, solid fixing must be available at the ceiling in the required positions which should be ascertained prior to the finished ceiling installation. In almost every case, some preparation is necessary, and it is advisable to discuss with the builder prior to installation

### 2. PLASTER ON TIMBER BATTENS

Timber at batten level directly above the screen rail for the vertical rod and at a point adjacent to the vertical rod penetration for the angle rod if required (angle must not exceed 30°).

### 3. DIRECT TO EXPOSED CONCRETE SLAB

Preparation is seldom required but light fittings and ceiling fans should be taken into consideration at the planning stage.

Air conditioning ducts, pipes etc, in the area above the ceiling sometimes makes it necessary to fabricate special brackets for the support hangers. Ceilings in existing buildings usually provide for the man holes to gain access. If is not possible to secure solid fixing, surface battens may be necessary.

### 4. SUSPENDED GRID CEILINGS

It is not recommended that hangers be supported from suspended grids, except where additional strength has been provided for in the Architect's specifications.

## INSTALLATION

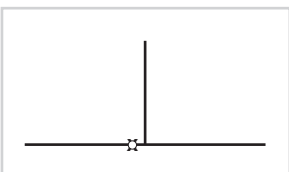


FIGURE 1: T-Joins

For T joins use either a track socket or a track end stop

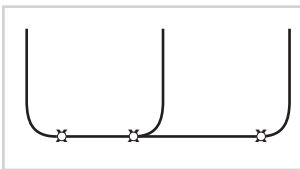


FIGURE 2:

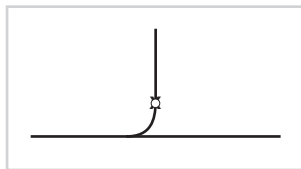


FIGURE 3:

The recommended track height is 2100mm from floor to bottom of track unless otherwise indicated. Walls and ceilings should be inspected at contact positions to ensure that fixing is available at the shown height.

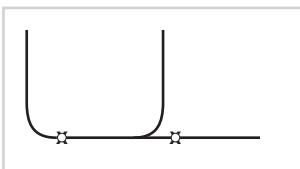
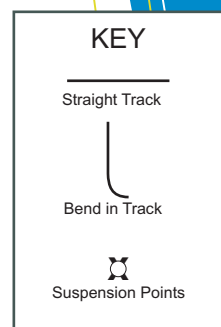


FIGURE 4:





# installationinstructions

SERIES 9000 MONOTRACK

## INSTALLATION

### WITH SUSPENSION TUBE HANGERS

- i) Put rail into position required and support it from the ground.
- ii) Then screw the hanger assembly into the ceiling ensure those are securely fastened. Use ceiling anchors or if it is preferable to screw directly to timber or something solid.
- iii) Then calculate the height required of the hanger tube to ensure the is at the correct height.
- iv) Hold the track up to where the tubes are hanging down and mark on the rail where the hanger assembly to the track must be places.
- v) Then screw the hanger assembly to the top of the track.  
Loosen alan key screws.
- vi) Now lift the track to the height required and place the hanger tubes into the hanger assembly and tighten the alan key screws.
- vii) If a dome is required to cover the hanger assembly in the ceiling this must be placed on the tube prior to connecting the track to the hanger tube.



# installation instructions

## SLOTTED TRACK

### MOVING CURTAIN RAIL SYSTEM

#### 1 Track Height

The recommended track height is 2100mm from floor to the bottom of the track, unless otherwise indicated.

The main front rail and the head rail on the wall must be parallel and it may be found, particularly in the case of long runs in existing buildings, that the head rail may have to be packed out to maintain a true line.

#### 2 Consult the layout plan

Consult the layout plan to determine positions of wall shoes and/or side fix brackets for support of main front rail. When the main front rail is assembled, remembering to insert trolleys prior to locking up, it may be laid out on the floor directly below its ultimate fixed position. Determine hanger positions on the ceiling, and plumb onto rail for fixing positions of hanger connections. Fix ceiling anchors in pre-determined positions and attach hanger connections to rail. Attach hanger tubes to ceiling anchors and lift rail to required position, support on stilts if necessary. Cut tubes to length and tighten up in hanger collars with 3mm alan screws.

#### 3 Connection of Moving Rail to Trolley Shoes

During the installation of supporting rails, that is main front rail and parallel bed rail, place trolleys in appropriate rails and locate them in position opposite to one another. When installation of rails is complete, measure the distance between the centre lines of each rail. This measurement is the cutting length of the monorail to be inserted into trolley shoes.

One end of the monorail is slid up into the end of the trolley shoe to its limit and care must be taken to hold rail at same angle of shoe and not to exert any downward pressure. Next, lift free end rail to the opening in bottom of opposite trolley shoe.



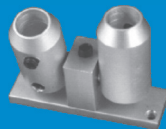
# installation instructions

SLOTTED TRACK

CONTINUED



Item No 10405



Item No 10401



## 4 Where moving rails traverse

Where Moving rails traverse past a ceiling hanger attachment, two point hanger plate (Item No 10405) should be used. Where necessary to join main front rail a right angled joiner should be used. This serves as a joiner and hanger combination support.

Recommended traverse of the moving rail is restricted to area between pairs of beds. If moving rails are required to be moved to ends of wards, it is recommended that a V Hanger (Item No 10401) be used in the centre of the main rail to offset possible side movement.

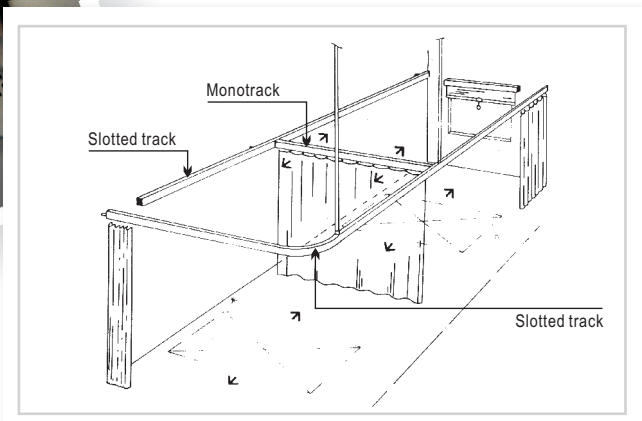
Then the vertical leg of the V Hanger should not be tightened in position until the moving rail is travelling freely, directly at that point.

**HANGER SUPPORT SHOULD NEVER BE FURTHER THAN 600mm FROM A BEND**

## 5 When the installation is complete

Moving rail traverse should be carefully checked and traverse stops tightened in corresponding positions on both head and front rails to ensure traverse distance is the same on both rails to ensure traverse distance is the same on both rails.

All ends should be cut square, preferably with a circular power saw and carefully de-burred prior to joining. Inaccurate joins must be rectified to allow free travel of trolley and curtain runners.

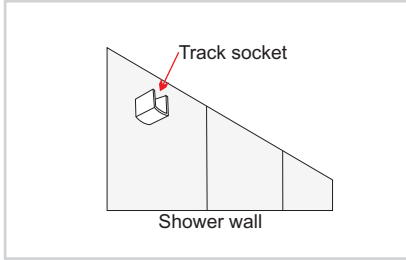


# installation instructions

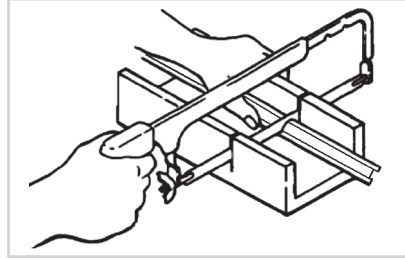
## MINI MONOTRACK

### INSTALLING SHOWER TRACK SYSTEM

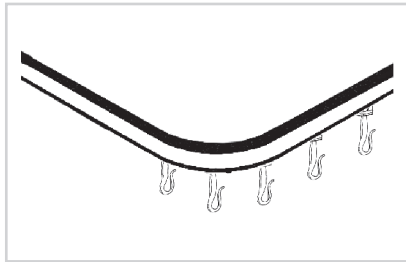
1. Attach track socket onto wall with counter sunk screws.



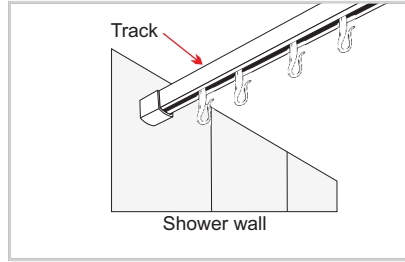
2. Cut track with hacksaw to suit exact size.



3. Insert curtain hooks into track.

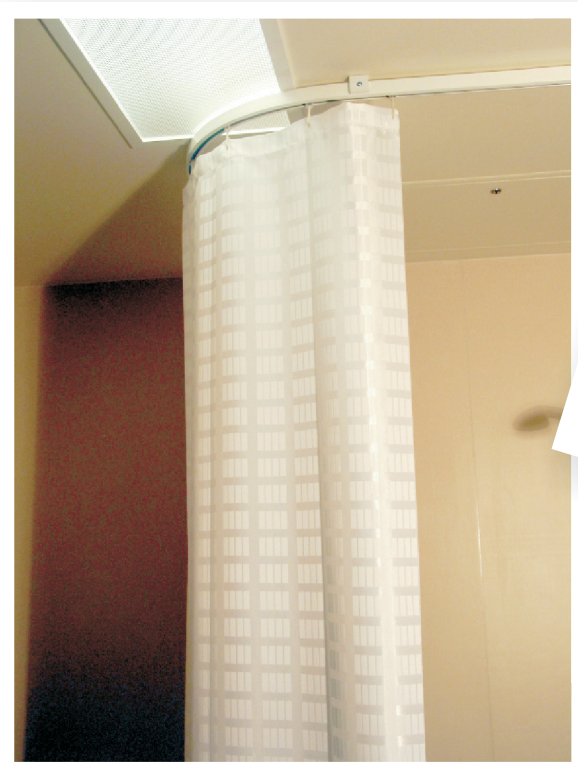


4. Drop rail into socket into each end, then fasten with counter sunk screws.



**NB**

For extra support you can use a ceiling bracket or suspended tube.





## suggested layouts

TYPICAL WARD LAYOUT

BENDS AND SETS

TYPICAL TWO BED LAYOUT

# suggested layouts

## TYPICAL WARD LAYOUT

### TYPICAL WARD LAYOUT

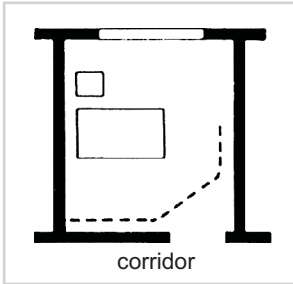


Figure 1 - Single Room with corridor window and door screened with one track.

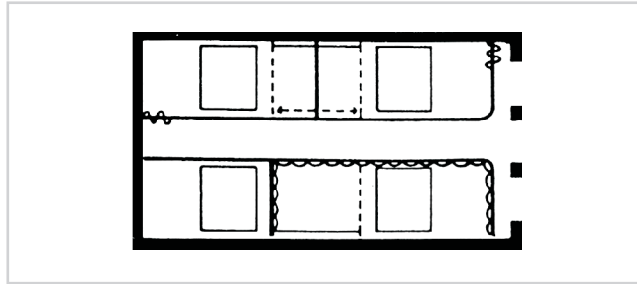


Figure 2 - Two or Four bed mobile

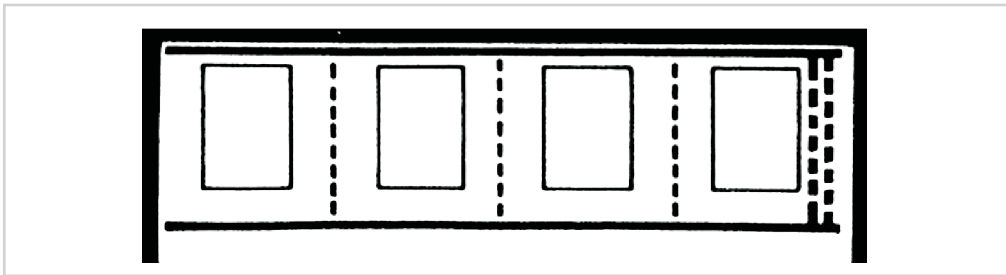
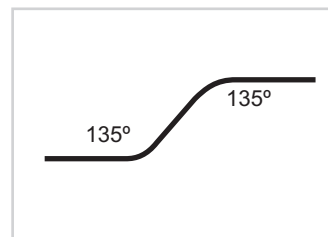
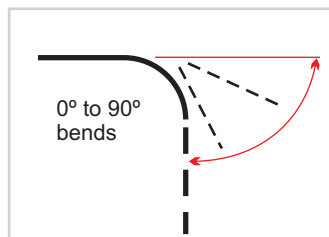
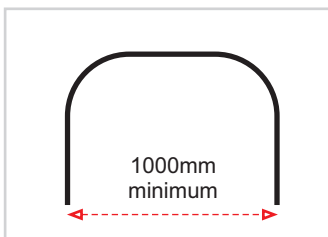


Figure 3 - Two rails parked at end can be used for economy screening of two end beds or one continuous centre bed. Head rail must be continuous. Corridor rail requires stabilising with 'V' hanger and horizontal brace.

### TYPICAL BENDS AND SETS

All bends 250mm radius



# suggested layouts

## TYPICAL TWO BED LAYOUT

### USING MONOTRACK

Install all Monotrack to a detail drawing selecting correct parts to be added. Examine walls and ceilings to determine adequate supports available.

Where false ceilings are used above ceiling pre-work may have to be done. Track is supplied in 4, 6 and 7.4 metre lengths, straight or with bends to your specifications.

Form configurations on ground then attach to pre-fixed wall shoes or brackets and ceiling hangers (use plumb line). Fix hangers near joins on the long length of the track side.

All bends should be supported by a support.

Solid Monotrack can stand up to 3 metres in straight height while fixed wall to wall, no supports are required.

### RIGID

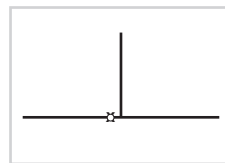


FIGURE 1

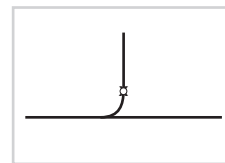


FIGURE 2

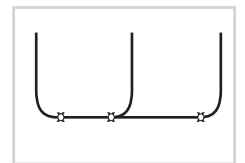


FIGURE 3

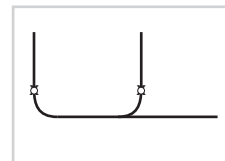


FIGURE 4

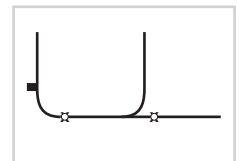
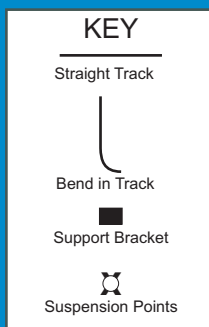


FIGURE 5



### MOBILE

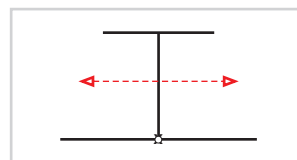


FIGURE 6

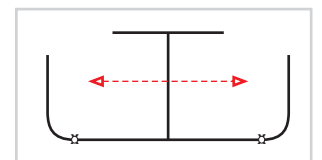


FIGURE 7

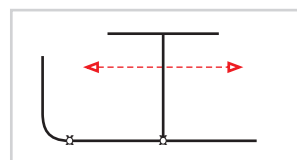


FIGURE 8

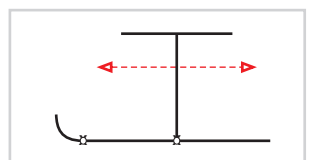
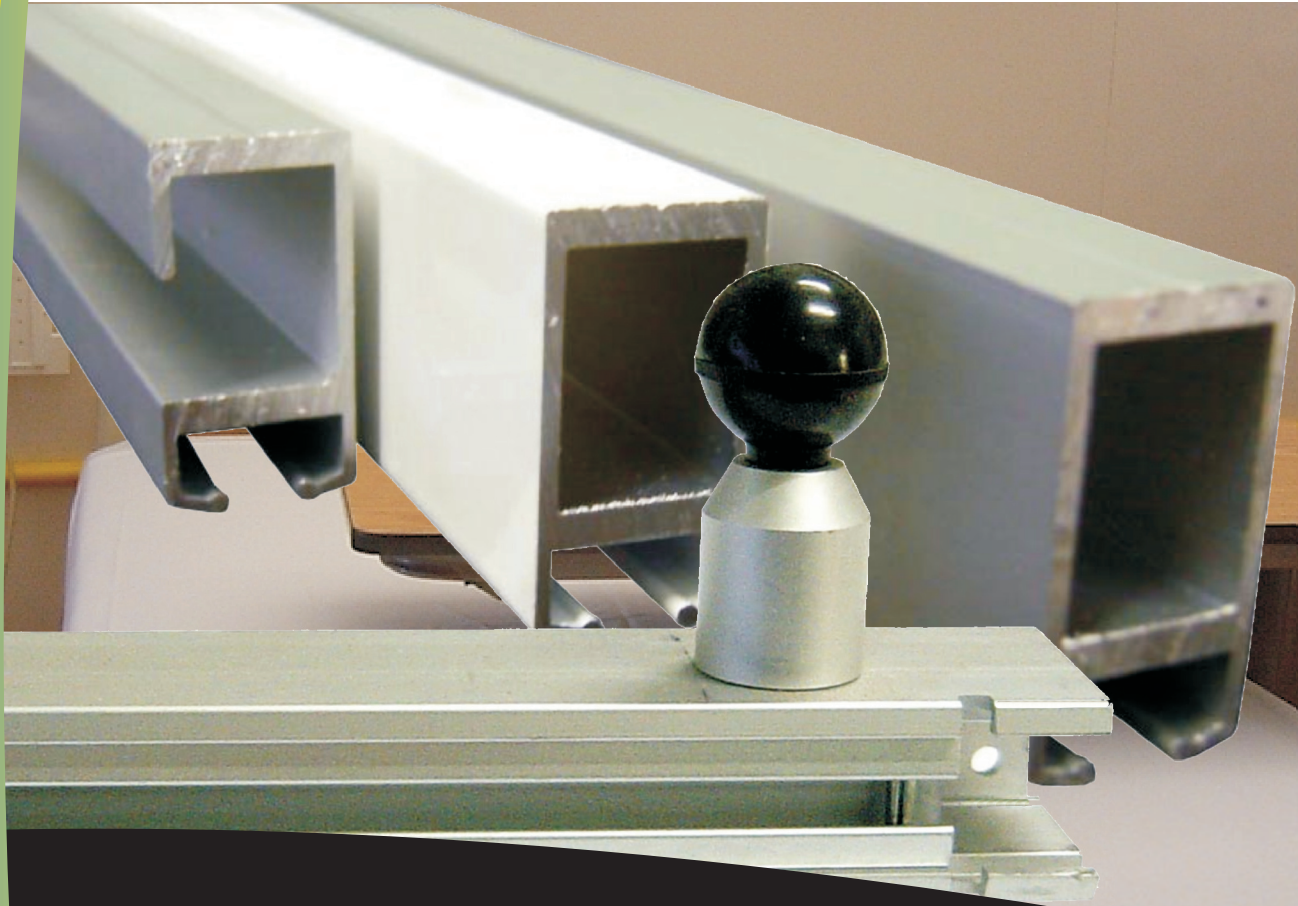


FIGURE 9







# componentsreference

SERIES 9000 MONOTRACK COMPONENTS  
MINI TRACK AND COMPONENTS  
IV (INTRAVENOUS) EQUIPMENT

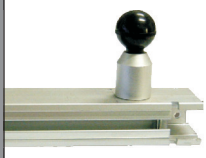








# monotrackcomponents

## QUICK REFERENCE GUIDE

IMAGE	ITEM No	DESCRIPTION	SIZE	COLOUR/FINISH	PACK
<b>MONOTRACK HOSPITAL SERIES</b>					
	10363	Series 9000 Monotrack Rigid Rail (Bedscreen Rail)	4.0m Length	Silver	6
	10364		6.0m Length		
	10365		7.2m Length		
	10366		4.0m Length	White	
	10367		6.0m Length		
	10368		7.4m Length		
	10369	Slotted Track Moving Rail	6.0m Length	Silver	6
	10370		6.0m Length	White	6
	10371	Mini Monotrack Shower and Cubicle Track	6.0m Length	Silver	6
	10372		6.0m Length	White	6
	10373	Suspension Tube	4.0m Length	Silver	10
	10374		4.0m Length	White	10
	10375	Internal Track Joiner		Silver	20
	10384	Joining Splice	40cm	Silver	10
	10385		40cm	White	10
	10386	Track End Stop		Grey	10
	10387			White	10
	10388	Monotrack Track Socket		Silver	20
	10389			White	20
	10390	Mini Monotrack Track Socket		Silver	20
	10391			White	20

# monotrackcomponents

## QUICK REFERENCE GUIDE

IMAGE	ITEM No	DESCRIPTION	SIZE	COLOUR/FINISH	PACK
<b>MONOTRACK HOSPITAL SERIES</b>					
	10378	Cassette Loader	Top	Silver	1
	10380		Left Hand		
	10381		Right Hand		
	10379	Cassette Loader	Top	White	1
	10382		Left Hand		
	10383		Right Hand		
	10396	Wall Mount Bracket		Silver	20
	10397			White	20
	10392	Monotrack Ceiling Mount Clip		Silver	20
	10393			White	20
	10394	Mini Monotrack Ceiling Mount Clip		Silver	20
	10395			White	20
	10398	Steel Wall Bracket	75mm Projection	Silver	20
	10399		75mm Projection	White	20
	10400	Swivel Curtain Hooks		White	300
	10401	Vee Hanger Assembly		Silver	10
	10402			White	10
	10403	Single Point Hanger Assembly		Silver	10
	10404			White	10
	10405	Two Point Hanger Assembly		Silver	10
	10406			White	10

# monotrackcomponents

## QUICK REFERENCE GUIDE

IMAGE	ITEM No	DESCRIPTION	SIZE	COLOUR/FINISH	PACK
<b>MONOTRACK HOSPITAL SERIES</b>					
	10407	Suspension Tube Swivel Mount		Silver	10
	10408	Suspension Tube Ceiling Cover		Silver	10
	10409			White	10
	10410	Trolley Assembly		Silver	1
<b>IV EQUIPMENT</b>					
	10497	IV Tree Carrier		Silver	1
	10498			White	1
	10499	Self Locking IV Trolley		Silver	1
	10500	5 Point IV Tree	900mm Extension	White	1
	10501		1200mm Extension	White	1





**ALLTRACK**  
**SUPPLIES**

*Established since 1987*

WESTERN AUSTRALIA  
289 Hancock Street,  
Doubleview WA 6018  
Phone 08 9446 1198  
Fax: 08 9446 5350

Email:  
[alltracks@bigpond.com](mailto:alltracks@bigpond.com)

Website:  
[www.alltracks.com.au](http://www.alltracks.com.au)